

## *In my nightmares*

Jamila Toderas

Each year we select graduates from the Canberra Institute of Technology and the ANU School of Art for PhotoAccess emerging artist residencies. The intention is to assist those artists, mostly young and with limited exhibition experience, to develop and present new work in HUW DAVIES GALLERY exhibitions. The residency projects can involve mentoring, courses, access to facilities and equipment and, towards the end of each residency, exhibition opportunities in solo or group shows. The exhibitions are assisted by funding under the ACT component of the Visual Arts and Craft Strategy.

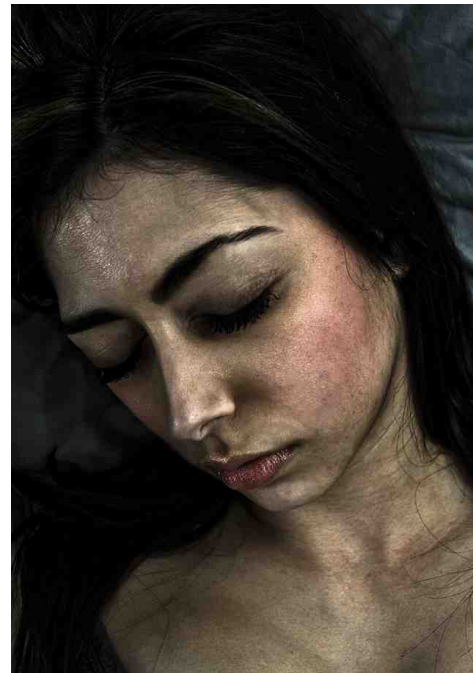
From the 2009 CIT graduating year we offered Jamila Toderas and Holly Treadway residencies and, unusually, both accepted. Holly's exhibition *sticks and stones* is showing alongside Jamila's in the first emerging artists exhibition by CIT graduates for some years. We hope others will follow their lead. Jamila and Holly are showing new work made specifically for these exhibitions.

Jamila Toderas has an unusual, dark vision. Her graduating show work was a series of dramatic self portraits suggesting fear and alienation. The *In my nightmares* work takes those emotions further, moving into areas most feared by young people and their parents alike: the fear of harm from madness, societal pressures, familiar seen (killer clowns?) and unseen demons, and self abuse. Toderas and her characters sleep in fear, wake in fear, lose themselves in fearful, alienating rooms and landscapes, and they bleed. Toderas' work, as she says in her Artist Statement, '... shows the depths of darkness hidden in my eccentric soul'.

These are carefully staged images, continuing Toderas' early interest in creating the subjects for her work including, in particular, costumed family pets. *Bonnie* is an early example. A close examination of the images in this exhibition, *Lost* and *Circus bloodshed*, for example, shows how far she has travelled from the days of dressing *Bonnie* as a cheerful clown. Her imagination and command of craft mark Jamila Toderas as a young artist of great promise.

PhotoAccess is proud to have helped bring Jamila Toderas' work to a wider Canberra audience through a 2010 emerging artist residency and her *In my nightmares* exhibition in the HUW DAVIES GALLERY at the Manuka Arts Centre.

David Chalker



*Sleep paralysis*



*Engulfed*

## Artist statement

*In my nightmares* is a series of photographic works representing anxiety, distressing events, childhood fears and, particularly, nightmares. With surreal faces and colours, the work is intended to disturb the viewer's state of mind.

As a young child I was always excited when taking photographs. Whenever my mother bought a disposable camera I would make photographs rather than take what I could see. I would dress my poor dog, Bonnie, up in my clothes and situate her in odd situations (not that a dog wearing clothes was not strange enough), getting overly frustrated if she would not pose how I wanted. Waiting a few days for the film to come back from the mini lab felt like torture.

While studying photography at the Canberra Institute of Technology my work was always somewhat commercial, meeting course needs. Since graduating my personal work has taken a more conceptual direction, especially through an exploration of surrealism.

This series reflects my breaking free into the conceptual world, and shows the depths of darkness hidden in my eccentric soul.

Jamila Toderas

July 2010

## Artist biography

### Education

Bachelor of Design (Photography), Canberra Institute of Technology (CIT), 2009; Advanced Diploma of Photography, CIT, 2008

### Solo exhibitions

2010 *In my nightmares*, HUW DAVIES GALLERY, PhotoAccess, Manuka Arts Centre, Canberra, ACT

### Group exhibitions

- 2009 *48-15*, Graduating CIT student's exhibition, High Court of Australia  
*Eclectic Exhibition*, Design Space, CIT
- 2008 P.O.W. Exhibition, CIT, High Court of Australia  
*Shine*, Café Yala, CIT, Reid, ACT (as part of VIVID 2008: The National Photography Festival)
- 2007 *Echo Exhibition*, CIT, High Court of Australia

### Awards

2010 PhotoAccess Emerging Artist residency

[www.jamilatoderas.com](http://www.jamilatoderas.com)



Bonnie



Demonic violation



*Bleeding beauty*



*Clean handed*



*Morning sickness*



*Circus bloodshed*

## List of works

All images are inkjet prints on Hahnemühle Museum Etching; artists proofs from an edition of 9; \$280 each unframed

		mm
1	<i>Morning sickness</i>	559 x 432
2	<i>Bleeding beauty</i>	559 x 432
3	<i>Sleep paralysis</i>	559 x 432
4	<i>Demonic violation</i>	559 x 432
5	<i>Lost</i>	432 x 559
6	<i>Engulfed</i>	559 x 432
7	<i>Clean handed</i>	559 x 432
8	<i>Circus bloodshed</i>	559 x 432



*Lost*